



Wisconsin Department of
Children and Families



WISCONSIN DEPARTMENT OF
Public Instruction



WISCONSIN DEPARTMENT
of HEALTH SERVICES

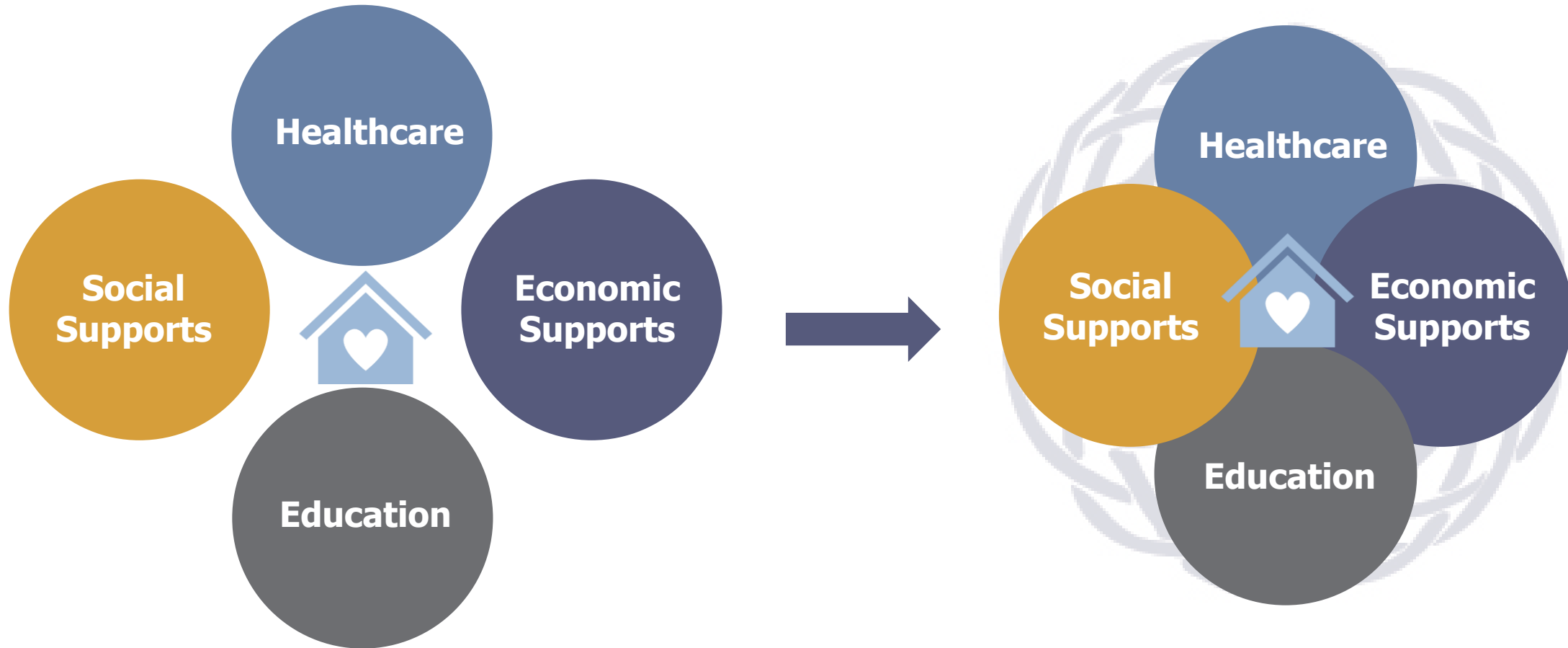


Consilience Group™ LLC

Wisconsin Birth-to Five Strategic Plan

Update to the WI Early Childhood Advisory Council (ECAC)

About Consilience Group



Our Team



**Meredith
Hennessy, MUP**
Principal



Sarahbeth Winn, MPP
Project Lead



Alfredo A. Cruz
Project Manager



Caitriona Hobart
Project Assistant



Consilience Group™, LLC

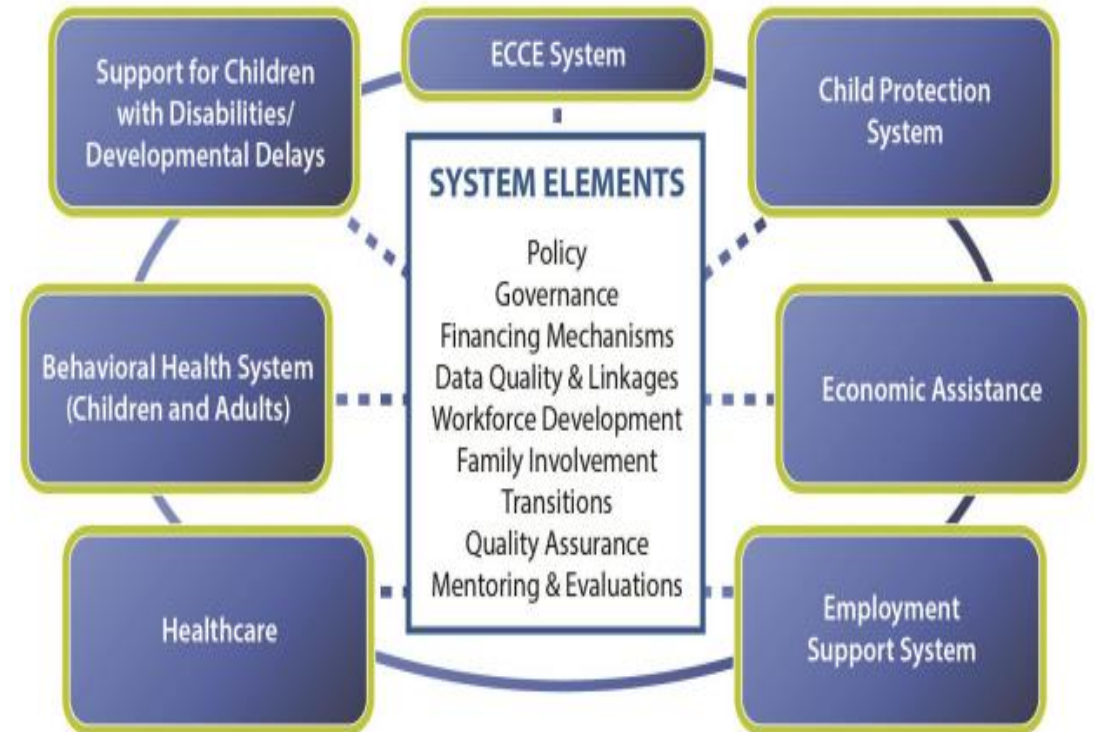
Project Overview



Wisconsin's B-5 Strategic Plan

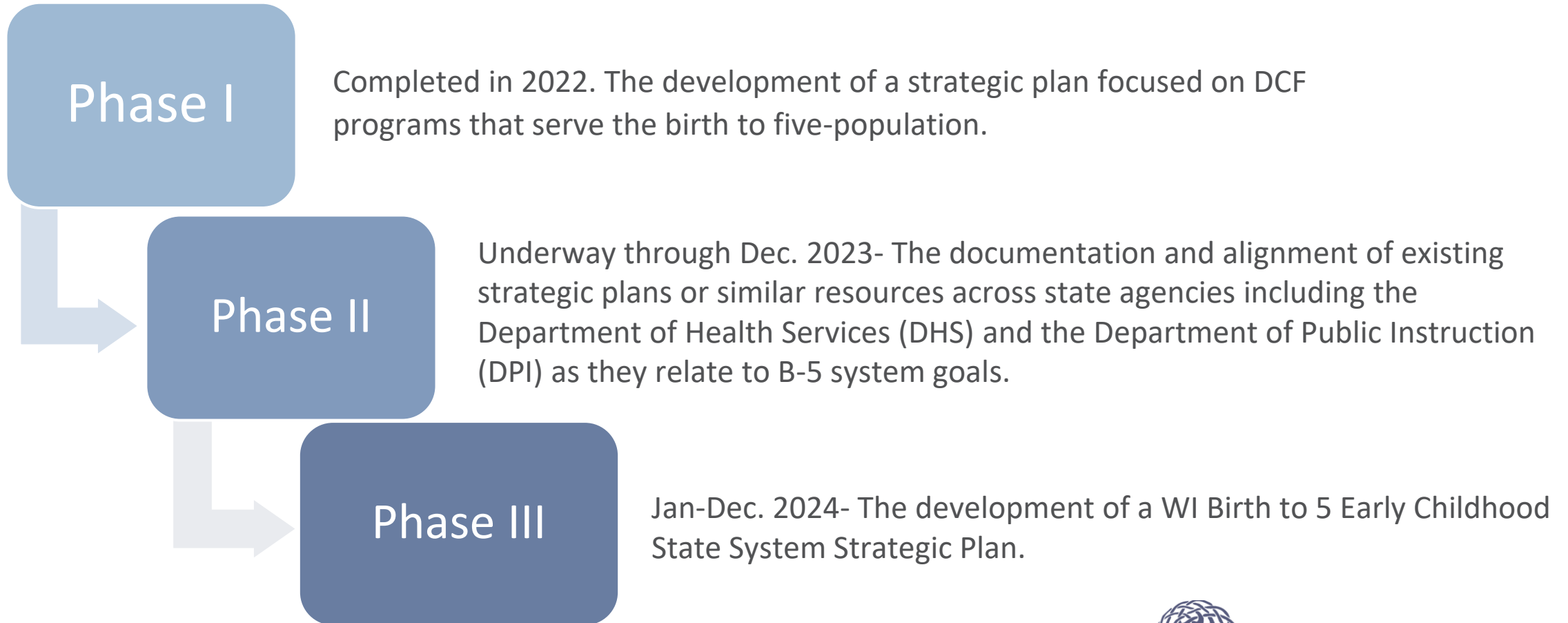
Overview

The development of a statewide B-5 Early Childhood State System Strategic Plan is a requirement of [Wisconsin's Preschool Development Grant Birth to Five \(PDG B-5\)](#), a federal grant administered by the Wisconsin Department of Children and Families (DCF) in line with Governor Evers' vision of "what's best for our kids is what's best for our state." The PDG B-5 supports states in their efforts to promote and implement system-level changes to maximize the availability of high-quality early care, education, and support for children and families; improve the quality of care; streamline administrative infrastructure; and improve funding efficiencies.



Wisconsin's B-5 Strategic Plan

The phases of this B-5 Strategic Planning Initiative are illustrated below.



Assessment Components



Document Review

- Review of programs information published information about programs and services for families with young children. Additional secondary documents and information provided and researched. Approx. 300 docs./websites/and reports.



Interviews

- 37 one-on-one interviews: DPI (10); DHS (12); DCF (15) with administrators, division directors, bureau chiefs, policy advisors, tribal liaisons and Secretaries and leadership team staff.



Small Group Discussions

- 31 small group discussions with division administrators, bureau directors, section managers, and other program staff across all DHS, DPI and DCF divisions.

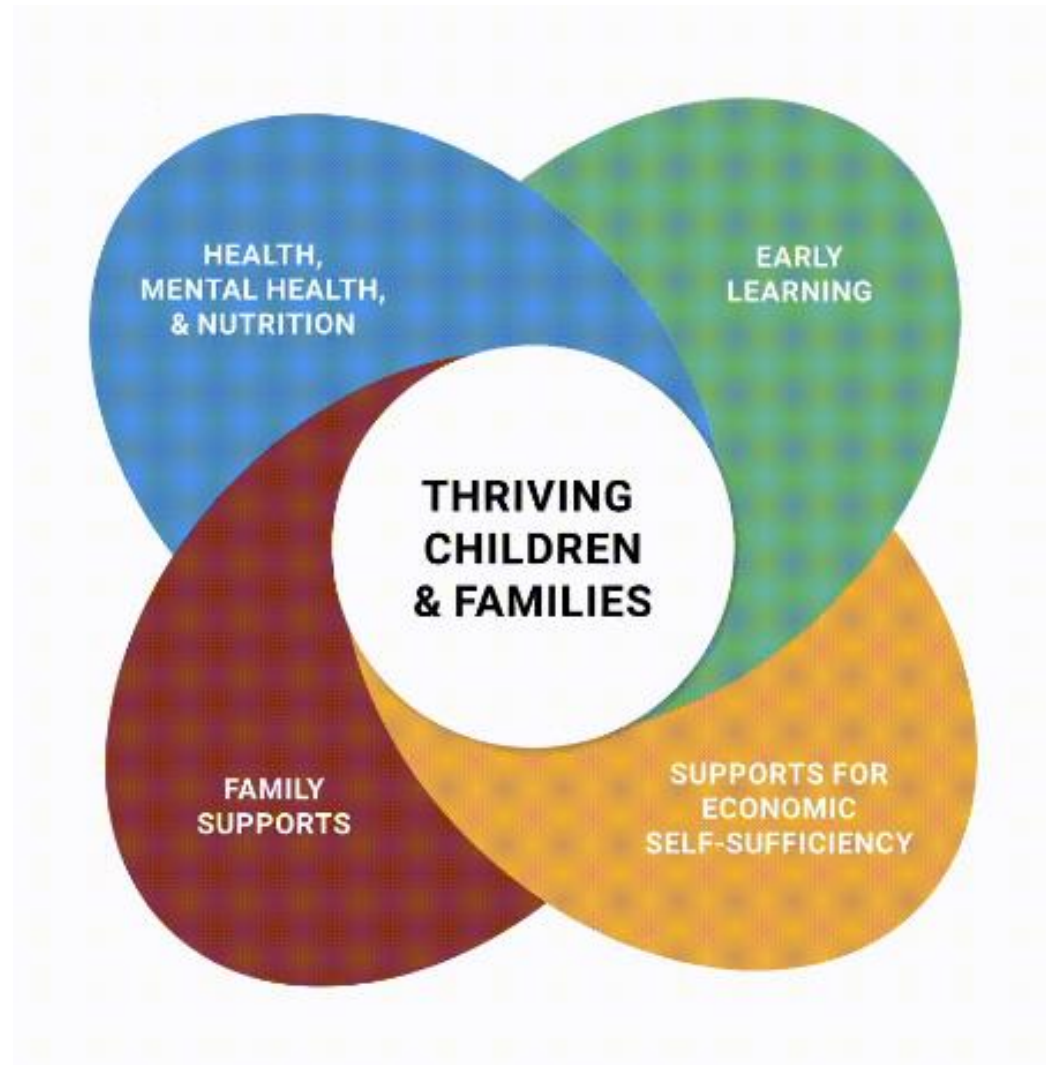


Birth to Five Objective

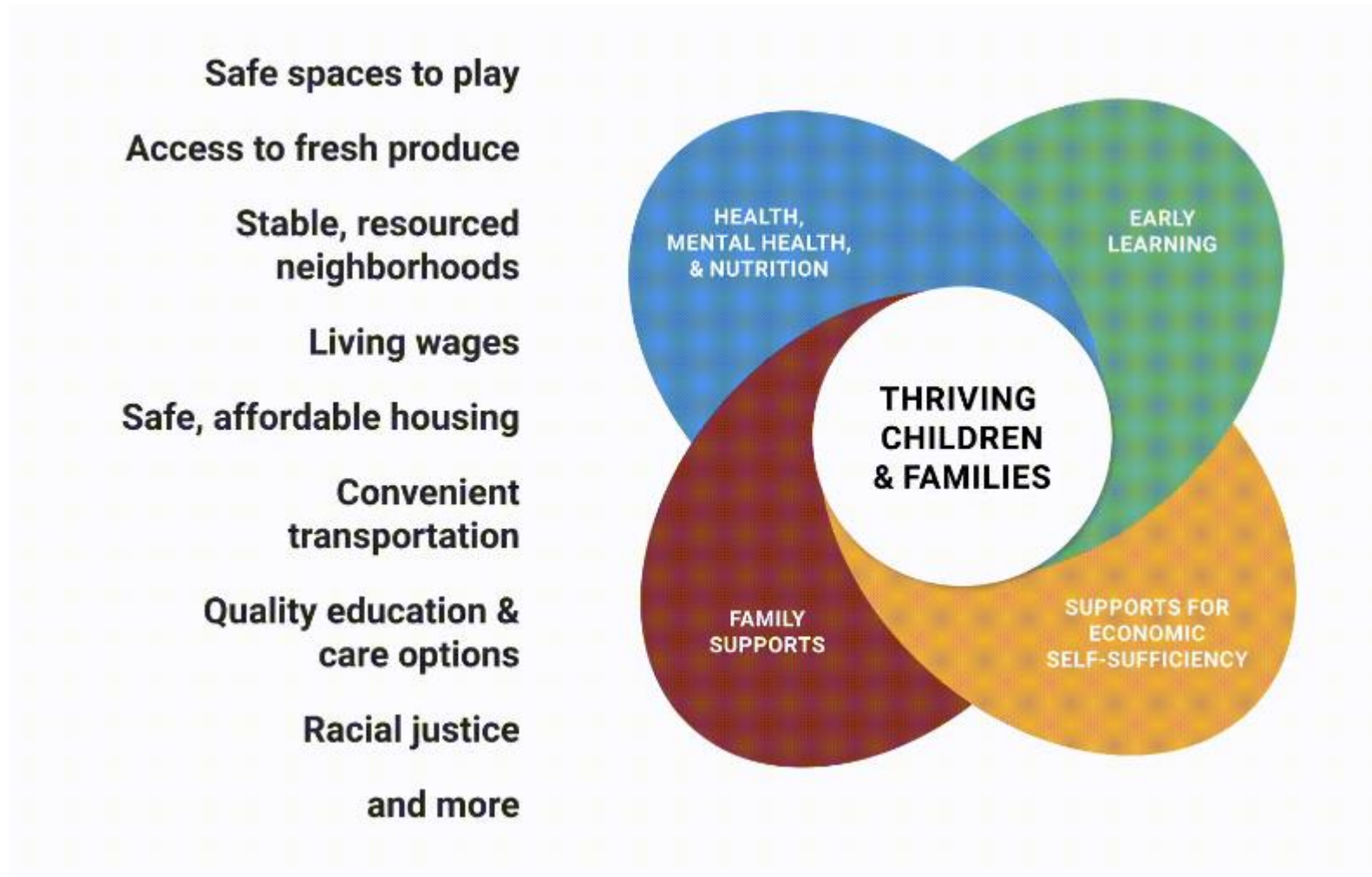
Unite multiple systems of care and stakeholders of those systems to inform, co-create, and jointly adopt a comprehensive, Birth to Five Early Childhood State System Strategic Plan that promotes **high quality, accessible, and equitable services.**



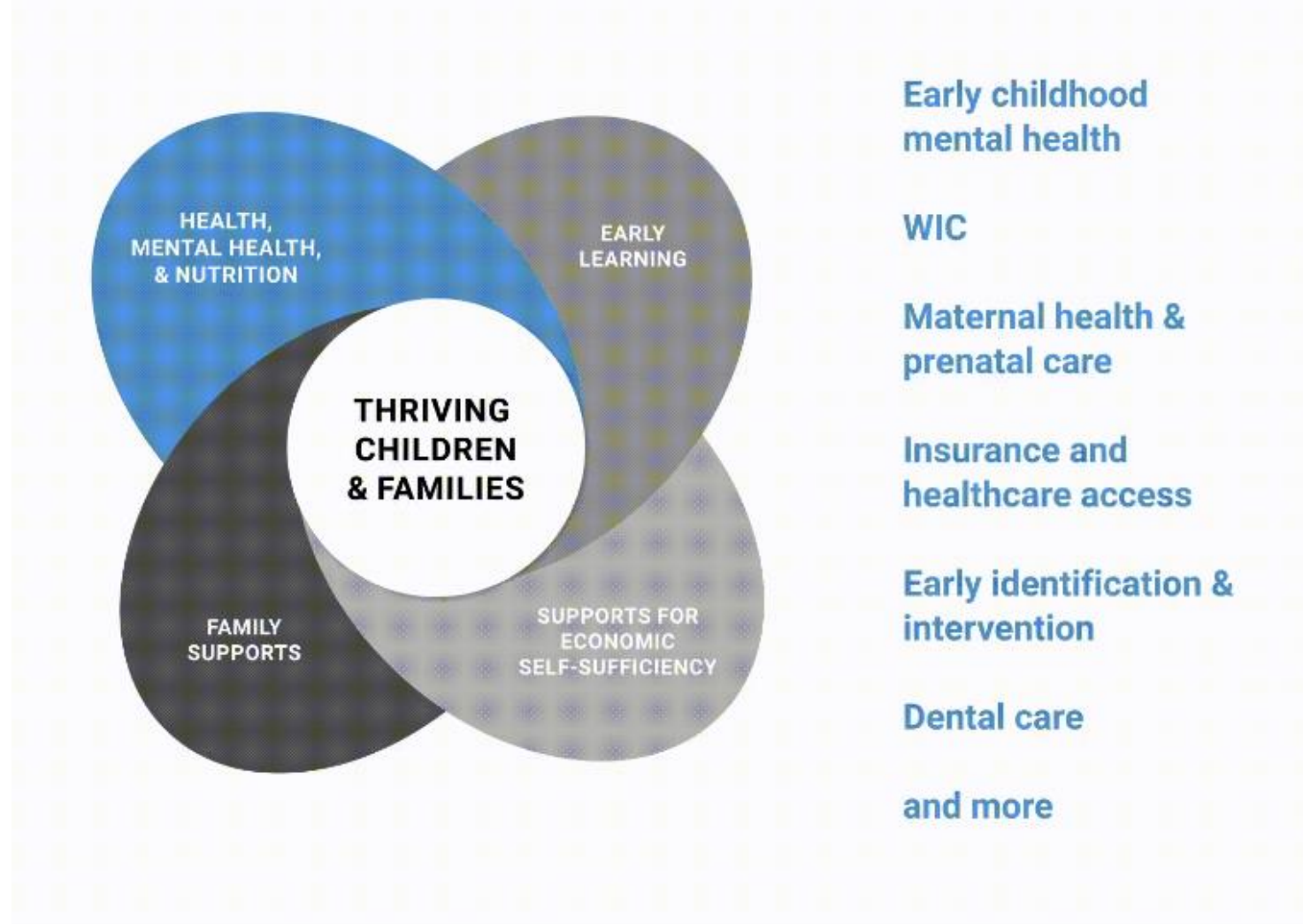
Early Childhood System



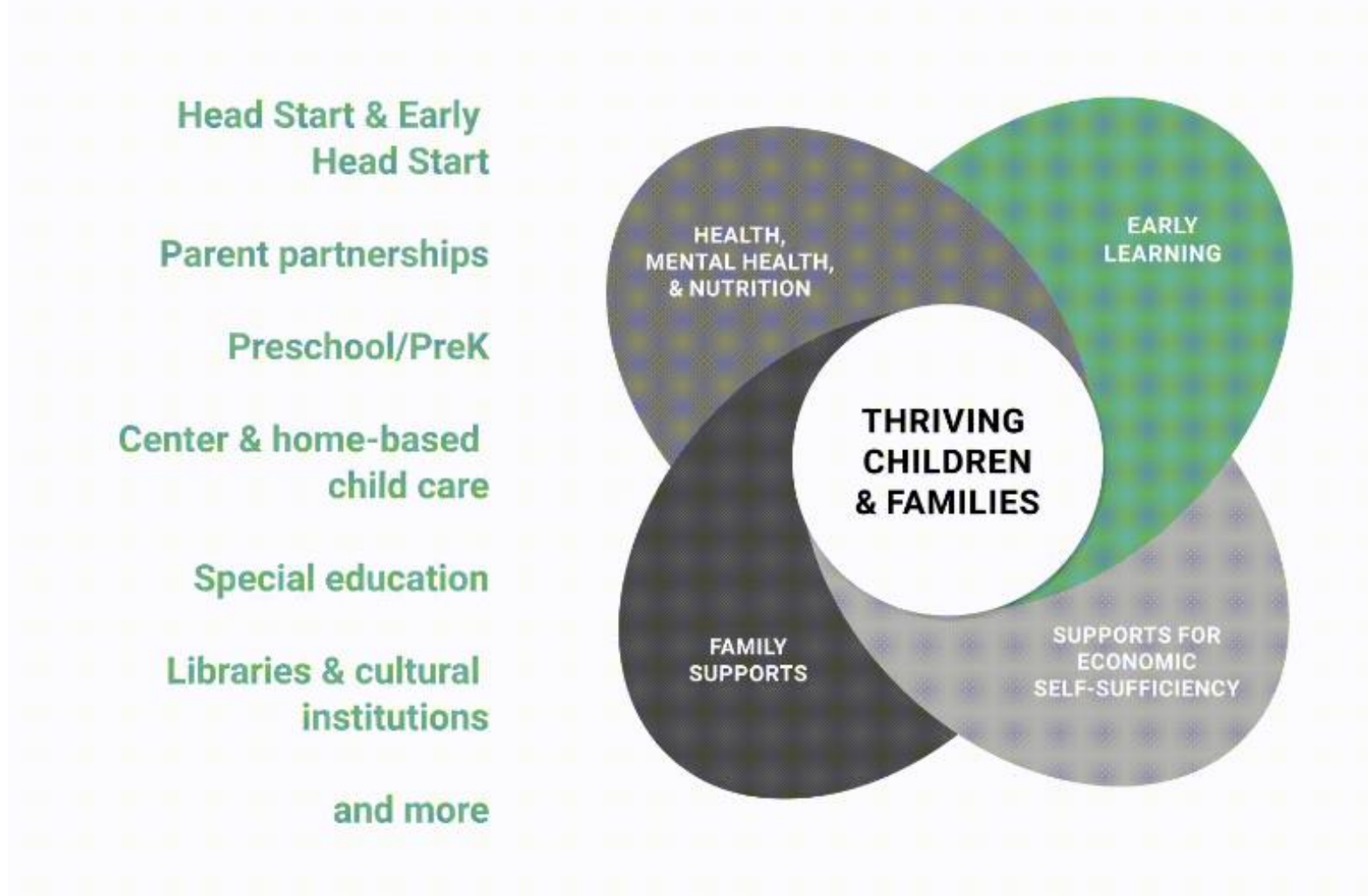
Early Childhood System



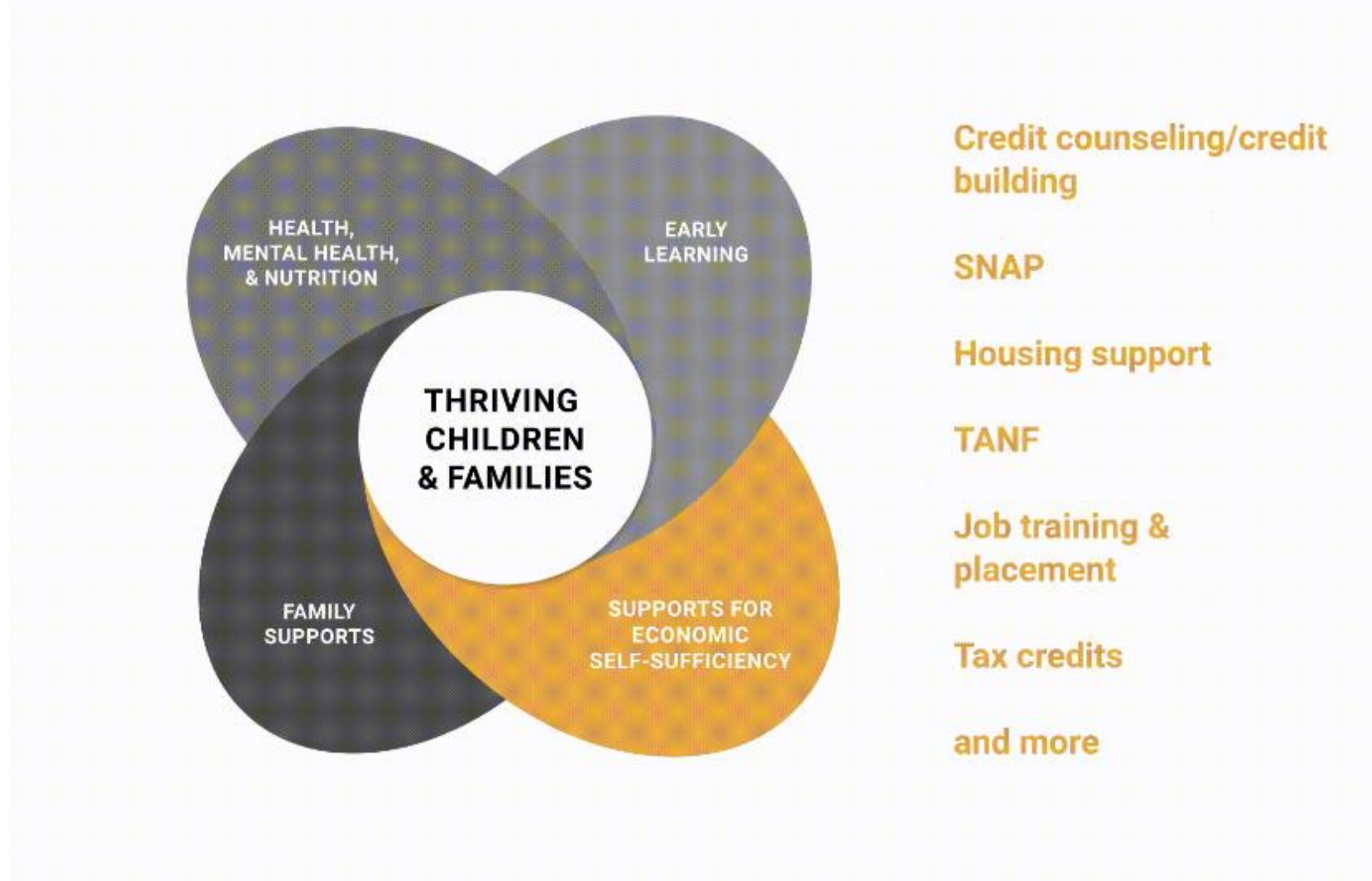
Early Childhood System



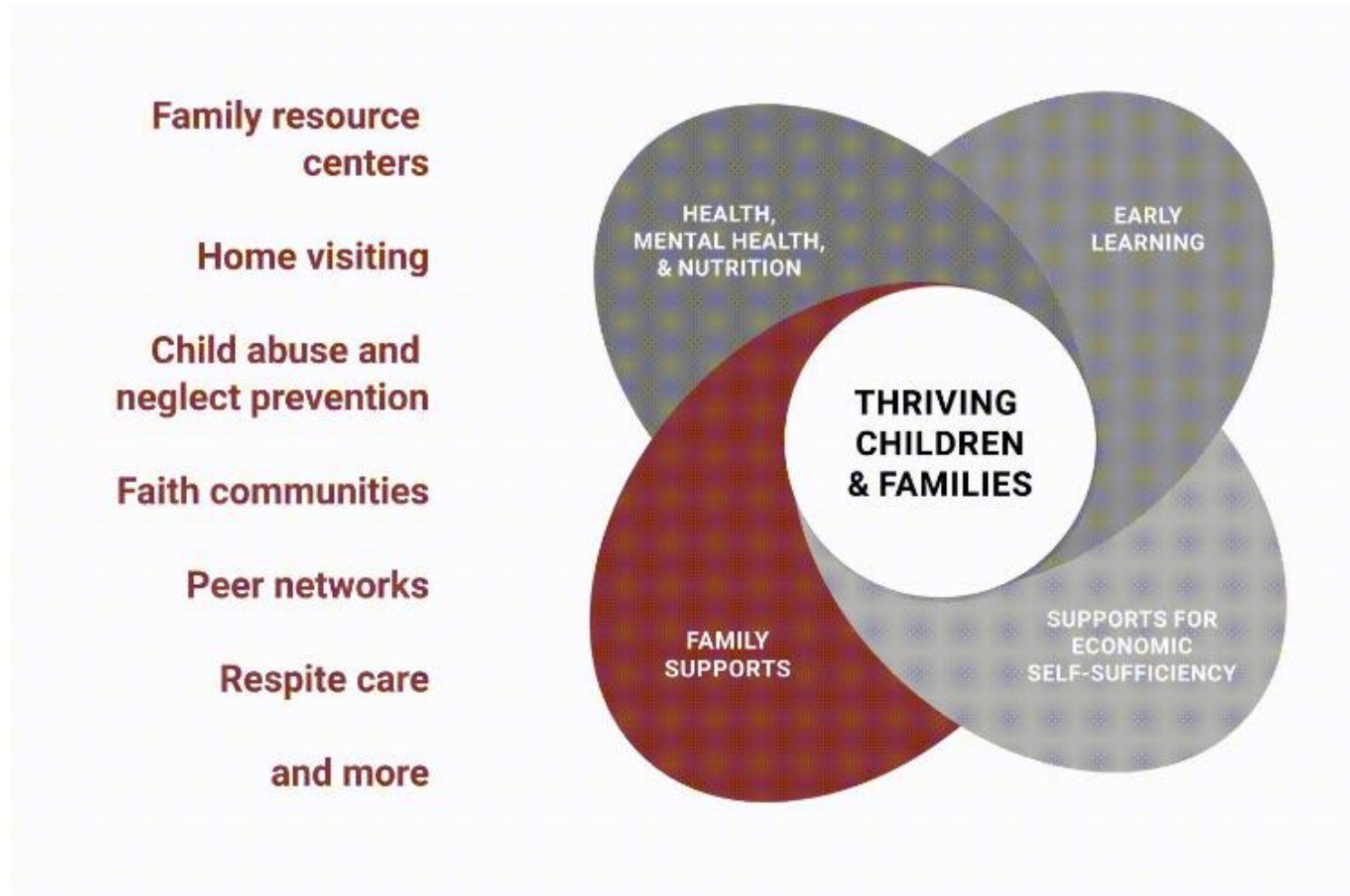
Early Childhood System



Early Childhood System



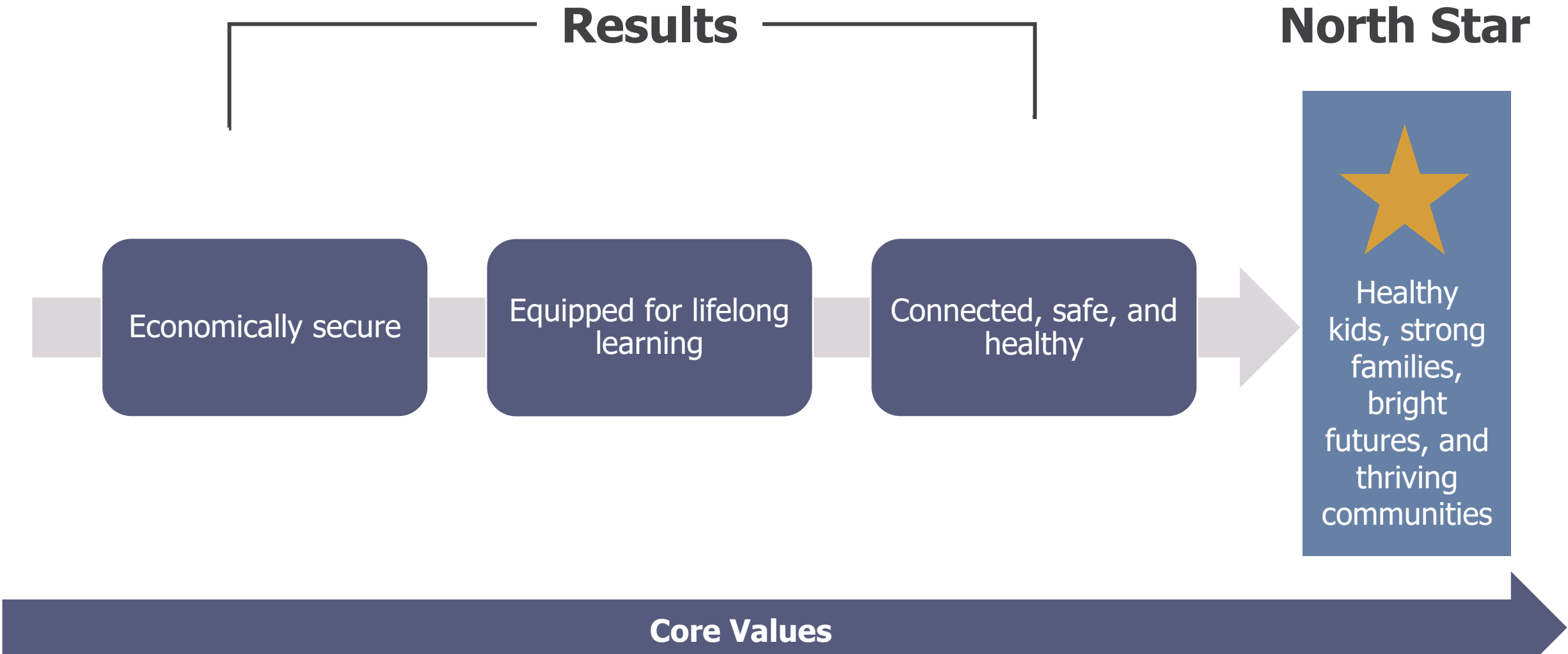
Early Childhood System



Strategic Framework



Strategic Framework



Strategic Framework

Strategies

Cross-cutting strategies that guide the work of the system for the next five years. Strategies are accompanied by key milestones and activities.

Results

Economically secure

Equipped for lifelong learning

Connected, safe, and healthy



Healthy kids, strong families, bright futures, and thriving communities

Core Values

Project Phases

PHASE 1

Completed in January 2023

DCF Strategic Plan focused on programs that serve the birth to five-population.

PHASE 2

Underway through December 2023

Documentation and alignment of existing strategic plans and/or resources across state agencies, including the Department of Health Services (DHS) and the Department of Public Instruction (DPI) as they relate to B-5 system goals.

PHASE 3

January-December 2024

The development of a WI Birth to 5 Early Childhood State System Strategic Plan.

