

Milwaukee County

**Birth to 3** 

Program

# Birth to 3 Program Family Packet

- Birth to 3 Program Brochure
- Frequently Asked Questions
- Birth to 3 Journey Roadmap
- What families can expect
- Mythbusters
- Frequently Asked Questions - Telehealth



[county.milwaukee.gov/Birth-to-3](https://county.milwaukee.gov/Birth-to-3) (414) 289-6799  
[Birth\\_to\\_threedsd@milwaukeecountywi.gov](mailto:Birth_to_threedsd@milwaukeecountywi.gov)



### CHILDREN DEVELOP FAST

Some of the fastest development for a child comes in the first three years of life. Like you, Children, Youth & Family Services (CYFS) wants your child to have every chance to develop to his or her full potential.



### HOW WE CAN HELP

If your child is two years and nine months of age or younger, and you are concerned he or she may be developing more slowly than expected, or have a disability affecting early development, Milwaukee County DHS's Birth to Three Program may be able to:

- Evaluate your child to identify potential developmental delays.
- Provide you with information about, and referrals to, important resources in our community.
- Provide early childhood intervention services.

# Milwaukee County Birth to 3 Program

1220 W. Vliet St.  
Suite 300  
Milwaukee, WI 53205  
(414) 289-6799  
(844) 304-6660  
FAX: (414) 289-8564  
TRS: 711



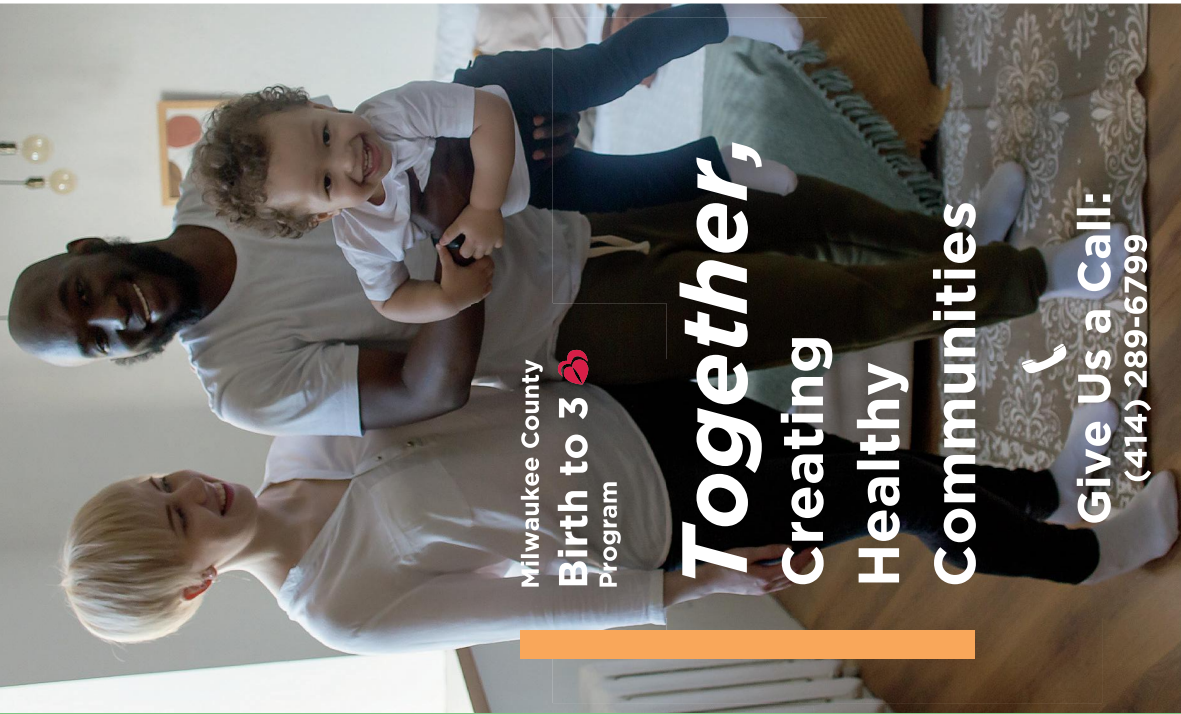
Like us on Facebook!  
[bit.ly/Birth-to-3](https://bit.ly/Birth-to-3)



MILWAUKEE COUNTY  
DEPARTMENT OF HEALTH  
& HUMAN SERVICES  
**CHILDREN, YOUTH  
& FAMILY SERVICES**



MILWAUKEE COUNTY  
DEPARTMENT OF HEALTH  
& HUMAN SERVICES  
**CHILDREN, YOUTH  
& FAMILY SERVICES**



Milwaukee County  
**Birth to 3** Program

# Together, Creating Healthy Communities

Give Us a Call:  
(414) 289-6799

## WHAT DO EVALUATORS ASSESS?

- Learning
- Moving
- Seeing
- Hearing
- Self-help
- Communicating
- Understanding
- Responding to and developing relationships with others.

If the evaluation finds your child is developing more slowly, the Milwaukee County DHHS Birth to Three Program will be there for your family.

Your service coordinator will work with you to put together a plan to address the specific needs of your child and family. He or she also will help you choose experts in our community, who provide the kinds of services that can help your child develop more fully.

## THOSE SERVICES MAY INCLUDE:

- Special education to improve your child's learning ability
- Physical and occupational therapy to help your child with muscle movement
- Speech therapy to expand your child's ability to communicate.

# Milwaukee County Birth to 3 Program



## REFERRALS ARE EASY

Referrals can be made from 8 a.m. to 4:30 p.m., Monday through Friday, by calling (414) 289-6799 (English and Spanish). Once referred, your child will be assigned a service coordinator and expert evaluation team. The screening can take place anywhere you and your child feel comfortable.

*If you believe your child is not developing quickly enough, know the Birth to Three Program is there to help.* The earlier a child receives an evaluation and services, the more we can do to help.

**Call: (414) 289-6799**

# Milwaukee County Birth to 3 Program

# Journey Through Early Intervention Services

[www.county.milwaukee.gov/birth-to-3](http://www.county.milwaukee.gov/birth-to-3)

Go!



ELIGIBILITY



1. Referral to Birth to 3

2. Your Service Coordinator will contact you to schedule your first visit for an evaluation or screening.

3. Your child's eligibility is determined for the Birth to 3 Program!

3b. Your Child wasn't eligible at this time, we will work to provide resources. You can re-apply!



7. Your Service Coordinator will contact you monthly but can be reached at any time to discuss concerns.



6. Service begins within 30 days of IFSP development



5. It's time to write your Individual Family Service Plan (IFSP for short).



A B C



4. Welcome to the Birth to 3 Program!



8. Every 6 months, we'll review and tune up your plan to be sure we're reaching your family's goals.



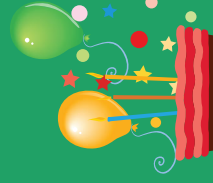
9. Your child is almost 3! Time to plan your child's transition out of Early Intervention Services.



10. Your Service Coordinator will work with you to find additional resources and services to fine tune your transition plan.



11. Happy Birthday!  
Your child is 3 and their Birth to 3 Journey has ended!





## Milwaukee County Birth to 3 Program

## Frequently Asked Questions

**We understand that there is a lot of information to take in about the Birth to 3 Program. Below are answers to the most frequently asked questions about Birth to 3.**

### **What is the Birth to 3 Program?**

The Birth to 3 Program is an early intervention program for infants and toddlers with developmental delays and disabilities. The Birth to 3 Program provides a range of services to families to enhance their child's development. The Birth to 3 Program is "family centered" and recognizes the importance of parents, family and friends in a young child's life.

### **How does my child qualify for the Birth to 3 Program?**

The Birth to 3 Program is for children ages birth to 36 months. Each child referred to the program will receive a team evaluation that includes two or more professionals from the following areas: special education, physical therapy, occupational therapy, speech therapy and more. Eligibility is based on a 25% delay in one or more areas of development, a diagnosed condition that is likely to result in a developmental delay or atypical (unusual) development that is likely to affect overall development.

### **How do I refer my child to the Birth to 3 Program?**

Referrals to the Birth to 3 program may come from anyone who has concerns about a child's development, which includes parents and guardians, friends, doctors, neighbors and child care providers. The Milwaukee County Birth to 3 Program accepts referrals by calling (414) 289-6799. Referrals can also be emailed to: [birth\\_to\\_threedsd@milwaukeecountywi.gov](mailto:birth_to_threedsd@milwaukeecountywi.gov) or faxed to 414-289-8564.

### **What happens when my child turns 3 years of age?**

If your child is currently enrolled in the Birth to 3 Program, your service coordinator will work with you to develop a transition plan at least 6 to 9 months prior to your child turning 3 years old. Your child can transition to your local education agency or public school, head start program or other programs within the community.



## Milwaukee County Birth to 3 Program

## Frequently Asked Questions

**We understand that there is a lot of information to take in about the Birth to 3 Program. Below are answers to the most frequently asked questions about Birth to 3.**

### **Is there a cost for families in the Birth to 3 Program?**

The following services are available at no cost to families that have a child who is eligible or may be eligible for the Birth to 3 Program: Referral, Screening, Evaluation, Development of the Individualized Family Service Plan (IFSP) and Service Coordination.

Families that are in the Birth to 3 Program are asked to provide access to bill their insurance company. In Wisconsin, The Birth to 3 Program uses a Parental Cost Share System where parents share in the cost of early intervention services for their child. The Parental Cost Share System takes into consideration your family size and net family income. Children will not be denied services because families are unable to pay.

### **What services are available for my child in the Birth to 3 Program?**

To meet the outcomes that families identify within the Individualized Family Service Plan (IFSP), early intervention services may include service coordination, assistive technology, audiology and speech-language pathology, family training, counseling and home visits, occupational therapy, physical therapy, social work services, special instruction and vision services and more.

### **Why are services provided in the natural environment instead of a clinic?**

For each child, the natural environment may be a different setting. Learning within natural environments includes use of your family's everyday activity settings, your child's interests and your own responsiveness to your child. Family activities provide many opportunities for your child to practice new skills. If Birth to 3 services are not able to be provided in the natural environment, exceptions can be made.



Milwaukee County  
**Birth to 3**   
Program

## What can families expect when they contact the Birth to 3 Program?

Families in Milwaukee County who are concerned their child may have developmental delays or disabilities can reach out to Birth to 3 for assistance. All conversations are confidential and can be done remotely over the phone or online.

### A resource & referral coordinator will help you:

- Make a referral to the Birth to 3 Program
  - A resource & referral coordinator can take your referral over the phone. Name of child, date of birth, parent/legal guardian information and reason for concern will need to be provided.
- Once a referral is complete, it is assigned to one of the Birth to 3 provider agencies.
- A Service Coordinator will contact you to help in the coordination and management of the referral and child's process in the Birth to 3 Program.

## What can families expect during the Birth to 3 eligibility process?

- Families will receive a phone call from a Service Coordinator welcoming them to the Birth to 3 Program and explaining the Birth to 3 process. When children are referred to the Birth to 3 Program a decision is made whether to conduct a screening or to begin the early intervention evaluation process. If a screening needs to be conducted that appointment is scheduled with the family during this phone call.
- During the screening a brief questionnaire which helps determine if an evaluation is needed is conducted. If the result requires further evaluation, an evaluation is scheduled with the family. The evaluation will determine whether the child is eligible for the Birth to 3 Program.
- During the evaluation process, the Service Coordinator and at least two professionals knowledgeable about your child's suspected developmental areas of need will be present to conduct the evaluation. Families observations are key to identifying the child's strengths and needs.
  - Following the evaluation, the Early Intervention (EI) team will meet with the family to review the evaluation results.
  - If the EI Team determines that the child is not eligible, the EI team may offer to rescreen the child within 6 months. The Service Coordinator will have suggestions or information about other resources to share with the family and assist in locating and gaining access to community services that families may find helpful to the child and family.
- After the evaluation and assessment, the family and other members of the team will be ready to develop a plan for the child and family. This plan is called the Individualized Family Service Plan (IFSP).
  - The IFSP is a collaborative partnership between the family and the early intervention professionals and is the framework for the family's involvement in the Birth to 3 Program.
  - The IFSP is designed to identify outcomes most important to the family and the strategies, resources, supports and services necessary to help reach them.
  - The IFSP meeting will be scheduled after the evaluation, within 45 days of the date the child was referred to the Birth to 3 Program. The meeting will be at a time and place that is convenient to the family.
  - Families will receive a completed copy of the IFSP.
- At any time, the Service Coordinators and Early Interventionists can provide you with information about, and referrals to, important resources in our community.

**Have questions? You can reach the Birth to 3 Program between 9:00AM - 5:00PM at 414-289-6799 or by email [birth\\_to\\_threedsd@milwaukeecountywi.gov](mailto:birth_to_threedsd@milwaukeecountywi.gov)**





Milwaukee County  
**Birth to 3**   
Program

# Myth Busters

There are common misconceptions about the Birth to 3 Program in Milwaukee County. Make sure the information you have is correct! Following are the top myths and corresponding facts about Birth to 3 and how early intervention can positively impact the life of your child.

**Myth:** My child must have severe challenges to qualify for services.

**Fact:** Children qualify under many different circumstances. To be eligible for the Birth to 3 Program, children qualify with 25% or greater delay, diagnosis, or atypical development.

**Myth:** Enrolling my child in the Birth to 3 Program will have a significant impact on their future health records, and schools and scholarship programs will see that my child has a disability record.

**Fact:** Records for early intervention services are kept for up to seven years of being in the program or when your child turns 19 years old. Early intervention records are only released at your request.

**Myth:** Once I enroll my child in an early intervention program, my child will be stuck in special education service programs for the rest of their life.

**Fact:** Some families worry about participating in early intervention because they don't want their child to be "labeled" when they enter school. Children receive services for different lengths of time, depending on what they need. Some children participate for a short time to address a temporary delay in development. Other children may require follow-up special education services once they enter school.

**Myth:** Early intervention will cost me so much money, and I cannot afford it.

**Fact:** Birth to 3 is one the most cost-effective programs available for your child. Screening, evaluation, development of the Individual Family Service Plan (IFSP) and service coordination are at no cost to families whose child is eligible for services. With your consent, services are billed under your health insurance, and a cost share is determined based on your income.



Milwaukee County  
**Birth to 3**   
Program

# Myth Busters

**Myth:** My work schedule and family lifestyle is too hectic to be involved with services at home.

**Fact:** The Individual Family Service Plan (IFSP) process is a collaborative partnership between the family and the early intervention professionals, so the IFSP will summarize the decisions made to support the child's development. How often and length of time services will be provided are decided by both the family and early interventionists. If at any time your plans change, you may communicate that with your service coordinator and early interventionists to make adjustments.

**Myth:** I do not have the ability or the knowledge to do what the early interventionist has coached me on, and I do not believe that I can do what they ask of me to help my child.

**Fact:** The early interventionist will work directly with the family and may demonstrate activities and strategies with the child and provide information on the child's development. Activities are based on the goals the family and the team develop together on the Individual Family Service Plan (IFSP). The early interventionist will discuss goals and strategies at each session. If there is concern, families are encouraged to reach out to the early interventionist for assistance and answer any questions.





## Frequently Asked Questions – Telehealth Visits

Planning a telehealth visit may bring up things you would like to ask. Here is a list of the most frequently asked questions about telehealth visits.

### **Will telehealth replace all my in-person visits?**

While some families and providers choose to use telehealth as their primary connection for early intervention, telehealth will not be an all or nothing approach. It's a great way to connect when a child or provider is sick, when road conditions are bad due to weather and/or during times where we are unable to conduct in-home visits.

### **Can an interpreter come to our telehealth visits?**

Yes. Interpreters can be connected via teleconferencing technology. If you are in need of an interpreter, inform the provider before the visit.

### **What do I do when a connection is garbled or breaking up during an appointment?**

The best approach is to disconnect and try again rather than spend session time discussing how the connection is breaking down. The provider can connect with you at a later time to review strategies and schedule another visit.

### **What can I do if I'm uncomfortable using technology?**

If you are nervous about doing telehealth services or are not comfortable with technology, know that your provider will offer help. You can also have a practice session prior to getting started with your telehealth visit. Another thing that often helps is to try FaceTime or Skype with family or friends before you start telehealth to get used to how the technology works.

### **What if my other children interrupt our session?**

One goal of early intervention is to have families be successful in their home environments. Siblings and other family members are a real part of your home environment. Work with your provider to see how your other children can be incorporated into the sessions so that they are helping with the goals too.

### **What if my child is crying and/or misbehaving during the session?**

Behavior issues can be hard whether the session is in person or virtual. During telehealth, the provider is not going to be able to provide hands-on help or distractions, but he/she will be able to walk you through the behavior with ideas or strategies. This will help you to be able to get through hard situations on your own in the future.

**Providing telehealth visits allows your services to continue during the COVID-19 Pandemic, while protecting your child's and family's health. For more information about the Birth to Three program, or to schedule a telehealth visit, call Birth to Three at 414-289-6799.**