

How do I get my Wisconsin Shares child care subsidy?

With help from the Wisconsin Shares child care subsidy program, Wisconsin families get the financial support they need to provide kids with high-quality child care—all while going to work, getting an education, and more. Once your application has been approved, it's time to choose the right child care provider for your family. You're just a few steps away from receiving financial support!

Step 1

Consider your child care options

ChildCareFinder.WI.gov is a great place to start your search. You'll need to select a child care program that is...



Rated by YoungStar, with a 2 Star quality rating or higher



Certified, licensed, or operated by a Wisconsin public school board

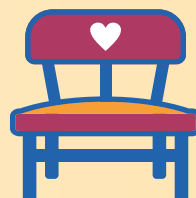
Step 2

Do your research

Before selecting a provider, go over a few important details. Not sure what to look for? Visit dcf.wi.gov/ccregulation/choosing to get tips on choosing child care.



First, be sure their hours and services match your family's schedule and needs.



Next, confirm that the provider has space for your child in their program.



Finally, ask about their prices. Calculate the monthly cost of care and double-check your budget. Remember, Wisconsin Shares does not cover the full price.



Wisconsin Department of Children and Families

WIShares.WI.gov



Step 3

Submit your child care choice to your local agency

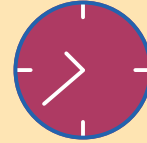
Request an authorization for child care subsidy from your local agency. You can use the online Child Care Parent Portal at mywchildcareparents.wisconsin.gov. Be ready to provide some specific info, including...



The child care provider's name, address, 10-digit ID number, and 3-digit location number



Your approved activity schedule



The times that your child will need child care

Step 4

Look for your Authorization Notice

Wisconsin Shares will let you know when your request has been reviewed, so check your mailbox or visit the Child Care Parent Portal at mywchildcareparents.wisconsin.gov to see your status. If your selected child care provider is authorized, you'll receive a notice that will list...



The name(s) of the child(ren) receiving child care



The subsidy dollar amount that will be loaded monthly onto your MyWChildCare EBT card, which should arrive in the mail soon



Your authorized child care provider



The number of approved monthly child care hours for each child



Congrats!

You're on your way to getting the high-quality care your child deserves—with a little help from Wisconsin Shares.



Wisconsin Department of
Children and Families

Want to learn more about the Wisconsin Shares child care subsidy program? Visit dcf.wisconsin.gov/wishares/parents today.

The Department of Children and Families is an equal opportunity employer and service provider. If you have a disability and need to access services, receive information in an alternate format, or need information translated to another language, please call the Division of Early Care and Education at 608-422-6002. Individuals who are deaf, hard of hearing, deaf-blind or speech disabled can use the free Wisconsin Relay service by dialing 711 to contact the department.